

Green food

**ETHICAL
PROPERTY**

www.ethicalproperty.co.uk

As a Company,
we decided to
only provide
meat-free lunch
options for
any in-house
meetings or events.

By making our AGM meat-free,
we saved **7.3kg of CO₂**

*That's equivalent of driving
from London to Lancaster!*



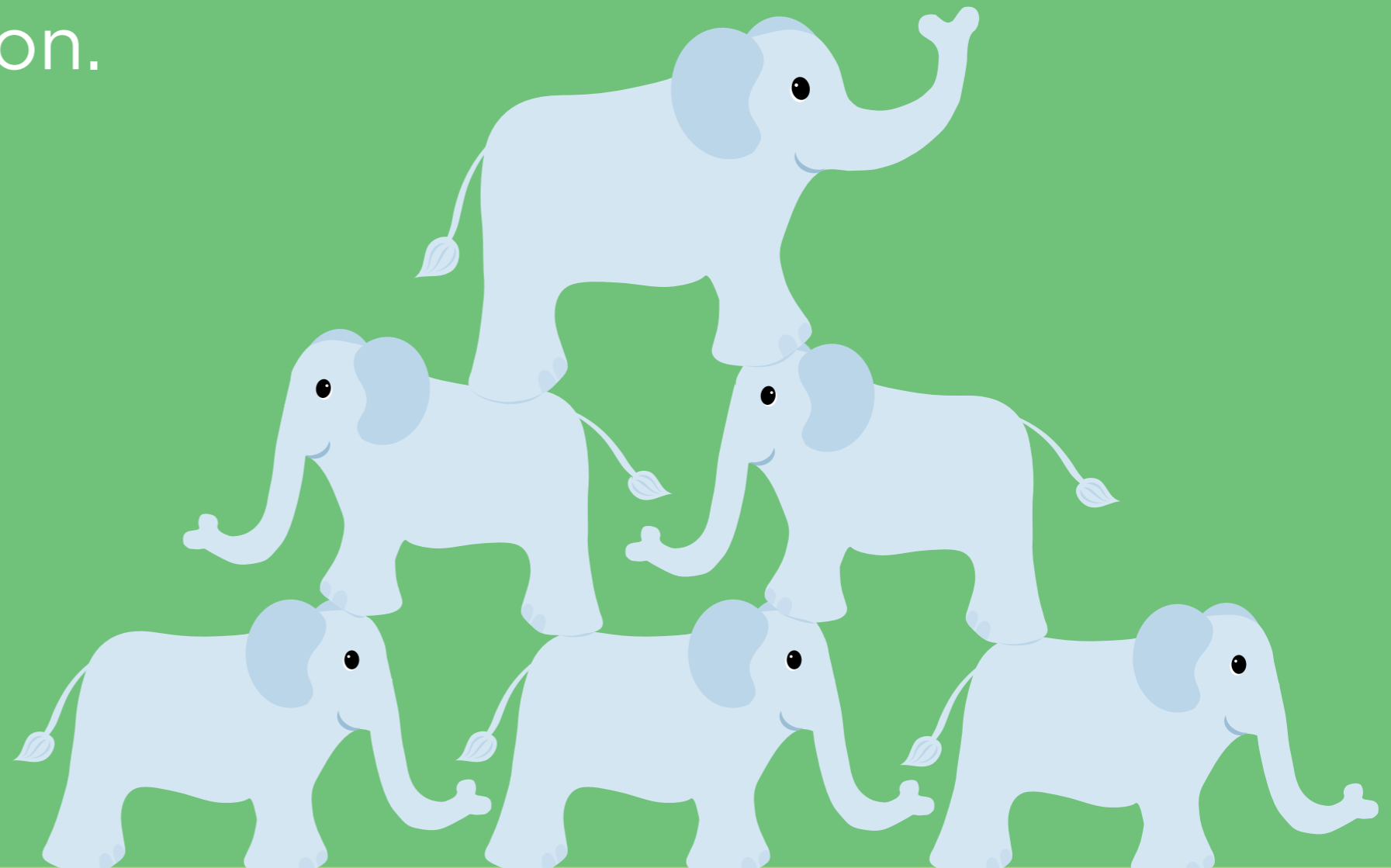
Green buildings

**ETHICAL
PROPERTY**

www.ethicalproperty.co.uk

The Green House, our centre based in Bethnal Green, London, was built with sustainably sourced timber and saved over **1,600 tonnes of CO₂** in its construction.

That's the equivalent weight of 228 elephants



Green energy

**ETHICAL
PROPERTY**

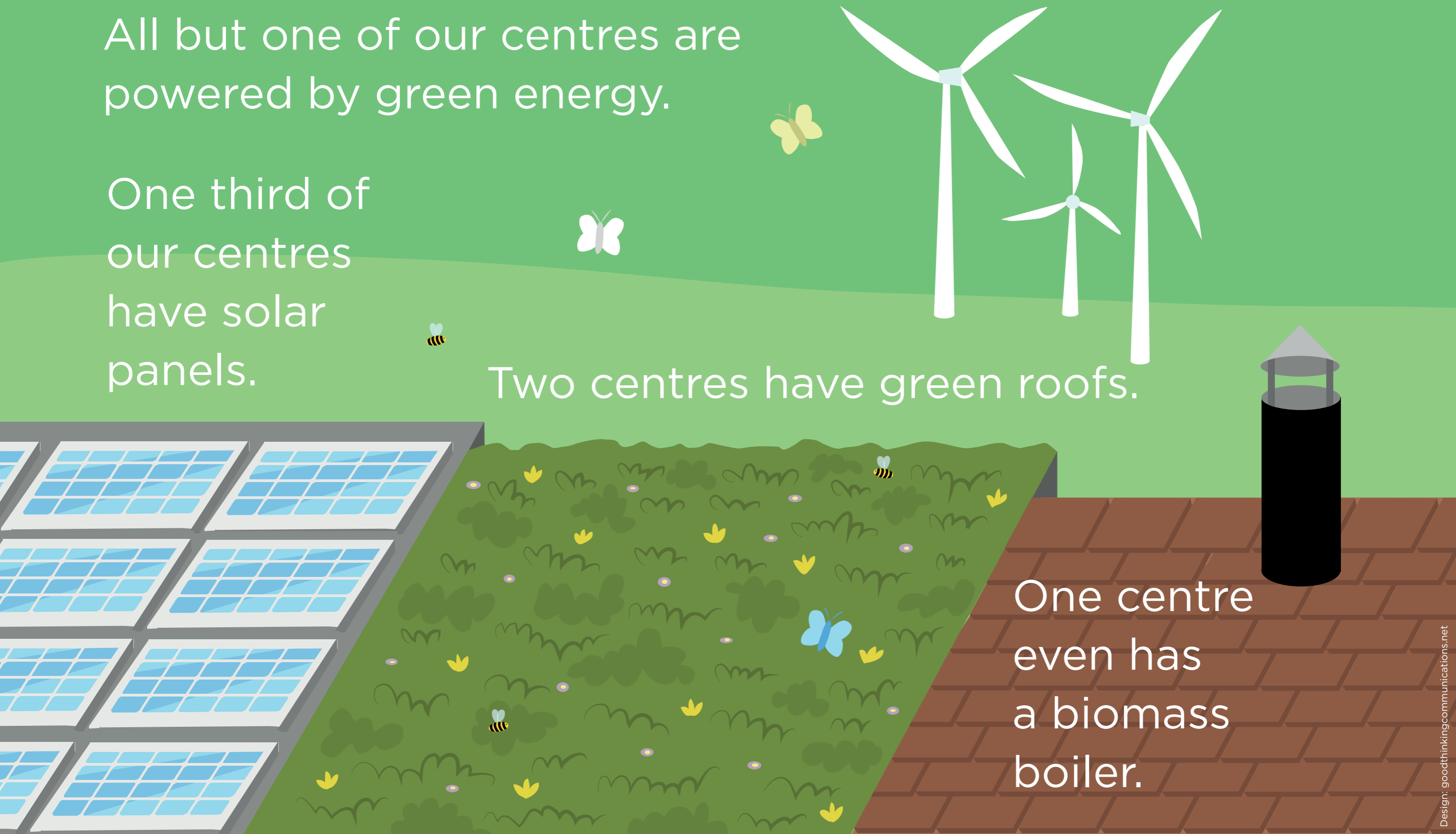
www.ethicalproperty.co.uk

All but one of our centres are powered by green energy.

One third of our centres have solar panels.

Two centres have green roofs.

One centre even has a biomass boiler.



Green travel

Over 90% of our employees travel to work by bike, foot or public transport.

We also provide:

- *ample bike parking*
- *shower facilities*
- *a Bike To Work scheme*
- *public transport season ticket loans*

We aim for all our centres to be easily reachable by public transport.

